



General Industry, Construction and Emergency Services: ***The partnership before you call 9-1-1***



Delivering quality Safety, Health and Rescue Services for over thirty years.



Delivering quality Safety, Health and Rescue Services for over thirty years.

Purpose

- Promote the needs of Emergency Services
- Discuss things CM / GC can do to better prepare
- Not a regulation presentation
- Common sense approach
- Educating others vs. enforcing authority



Delivering quality Safety, Health and Rescue Services for over thirty years.

Planning

Planning should include the following:

1. Hazard identification/assessment
2. Emergency resources
3. Communication systems
4. Administration of the plan
5. Emergency response procedure
6. Communication of the procedure
7. Debriefing and post-traumatic stress procedure.



Fire/EMS/PD

- Ladder / Tiller / Tower
 - Up to 50+ feet in length
 - Over 60,000lbs
 - Footprint 12' to 18' left and right
 - Height's over 12'
- Engine
 - Up to 30+ feet in length
 - Over 30,000lbs



Delivering quality Safety, Health and Rescue Services for over thirty years.

Common Sense Partnership

- After you break ground:
 - Invite Emergency Services to the site for a visit
 - Walk them around, show them entry-egress etc.
 - PowerPoint / some type of presentation at the station
 - Food/Drinks



Delivering quality Safety, Health and Rescue Services for over thirty years.



Site Suggestions

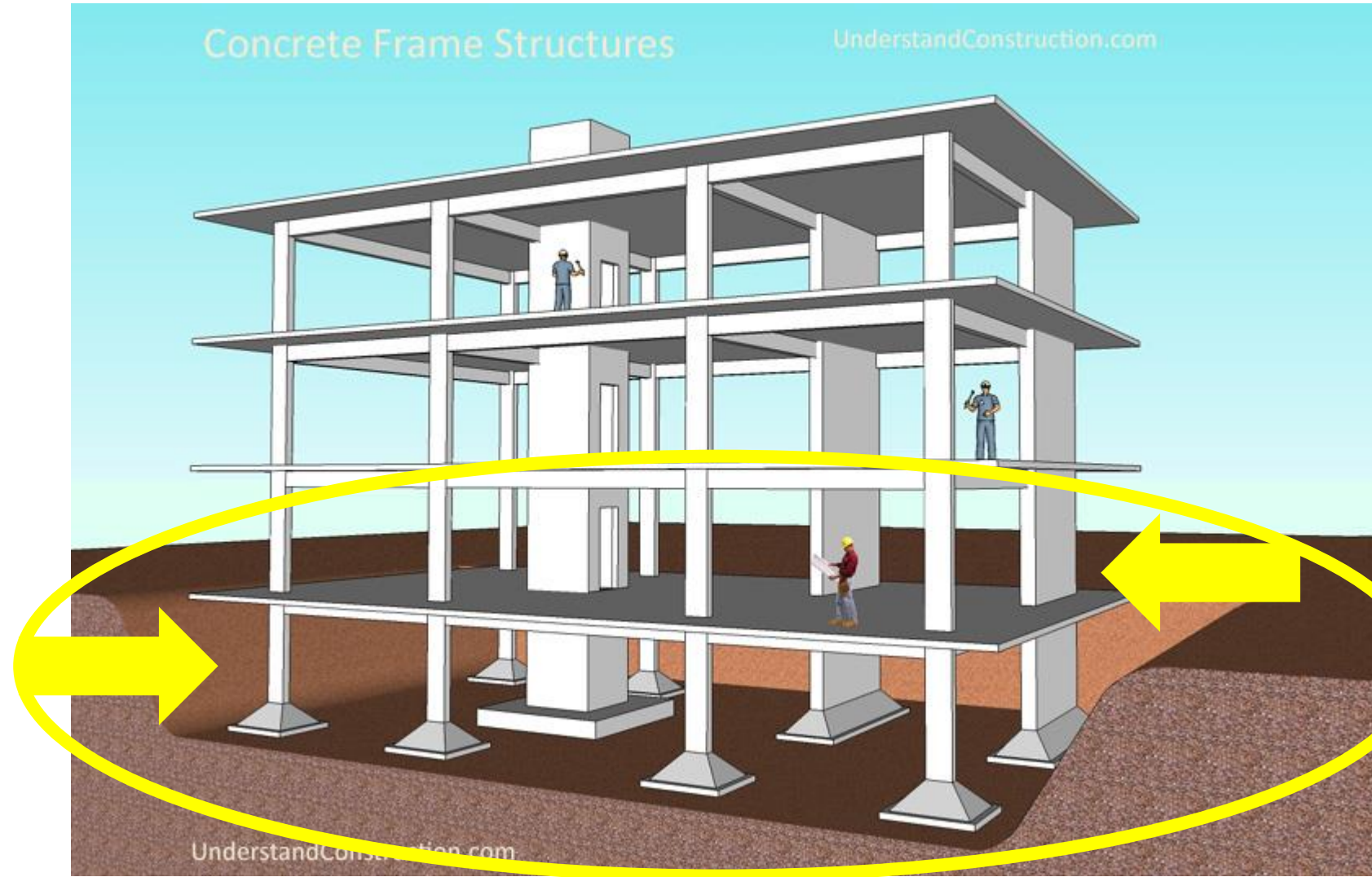
- Where is the front?
- Can the Ladder truck access the building?
- Are the floor(s) stable and safe?



Delivering quality Safety, Health and Rescue Services for over thirty years.

911 Call for a Med Emergency
on Floor 2

- Sub floor or floor 1?
- Front or back?
- Staging Apparatus
- Proper signage and markings around each floor and not just at the exit?!?
- Exterior signs



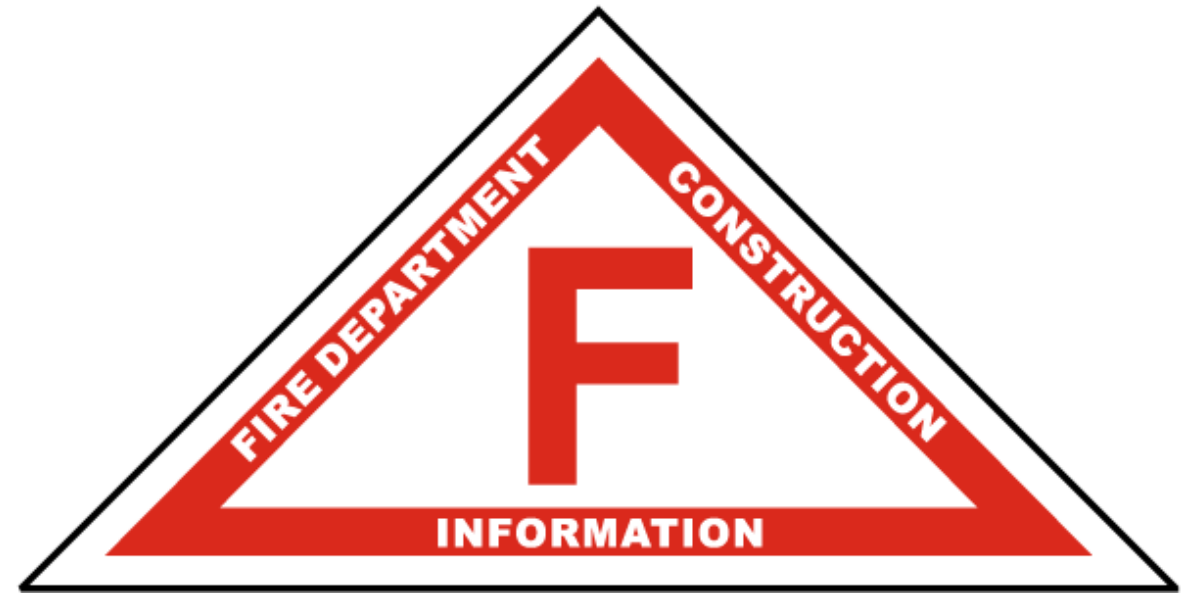
Delivering quality Safety, Health and Rescue Services for over thirty years.



- Which building?
- Which Floor?
- Does Safety Know?
- Signs?
- Have you invited FD/EMS for a tour?



Delivering quality Safety, Health and Rescue Services for over thirty years.



Delivering quality Safety, Health and Rescue Services for over thirty years.

- Gangplank and then the climb
- Does FD have skill?
- Have they been invited to climb?
- Weather, Time of Day etc?



Delivering quality Safety, Health and Rescue Services for over thirty years.



- May opt to use tower crane for a rope lower
- Need for knowledge and training with OE's

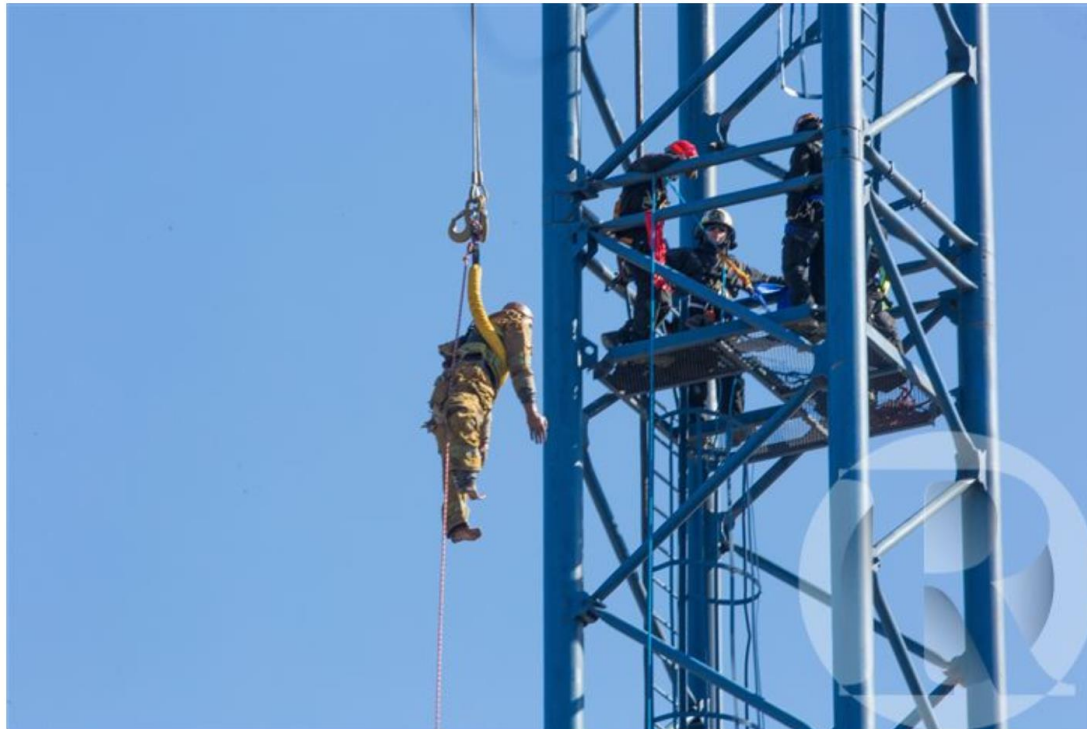


Delivering quality Safety, Health and Rescue Services for over thirty years.

Greenville Fire-Rescue Collaborates with Taft Development Group on High-Angle Rescue Practice

February 12, 2018

< >



Greenville Fire-Rescue pulls a dummy to safety during a simulation crane rescue mission, Friday, Feb. 9, 2018.

©Juliette Cooke/The Daily Reflector



Delivering quality Safety, Health and Rescue Services for over thirty years.



- Rigger & Signaler on site all day?
- Will EMS/FD ride the basket?
- Prior training / walk through.



Delivering quality Safety, Health and Rescue Services for over thirty years.



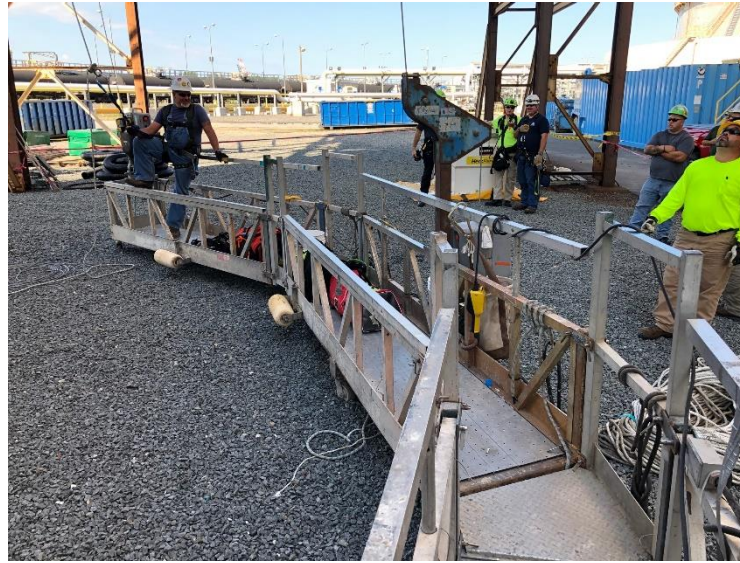
- How many hoist(s)?
- Operated all day at the same time?
- Staggered breaks?
- Emergency?
- PD/FD/EMS use?



Delivering quality Safety, Health and Rescue Services for over thirty years.

Scaffolding

- Supported
 - Mass Climber
- Suspended



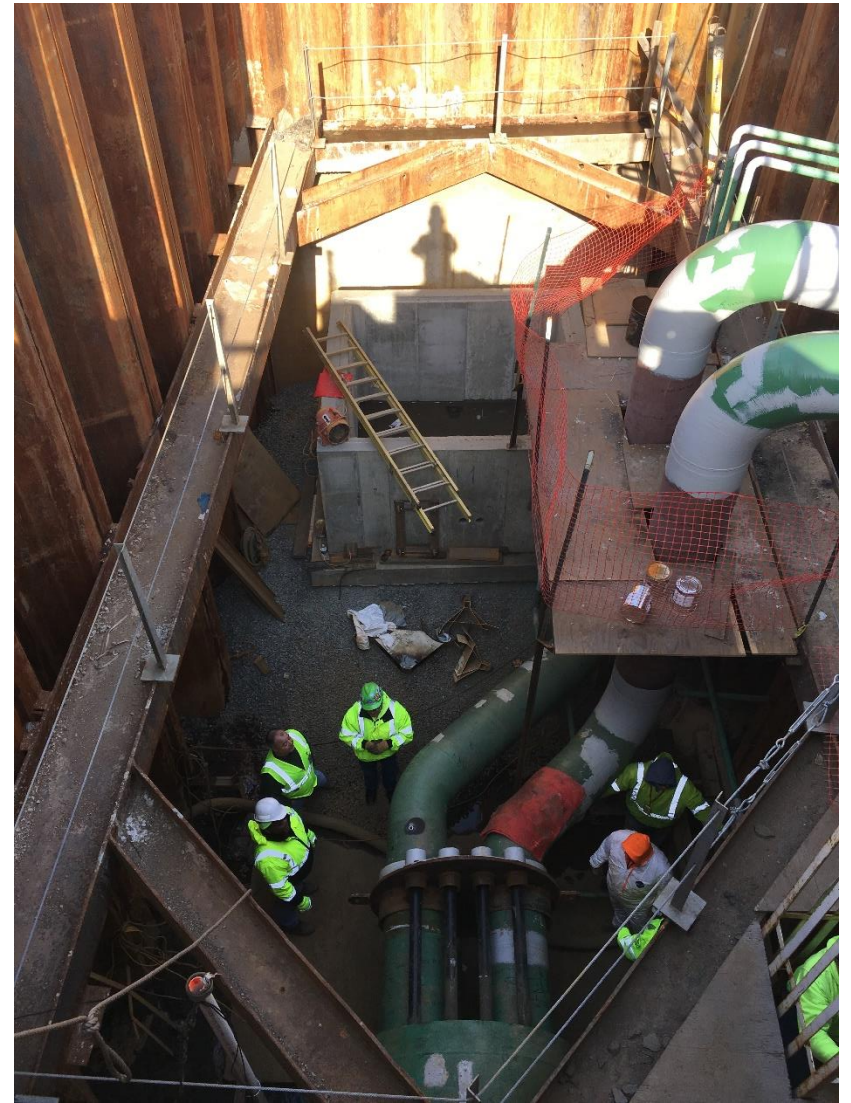


Delivering quality Safety, Health and Rescue Services for over thirty years.

Penetration from one floor to another via extension ladder.



Delivering quality Safety, Health and Rescue Services for over thirty years.



Delivering quality Safety, Health and Rescue Services for over thirty years.



Delivering quality Safety, Health and Rescue Services for over thirty years.





Delivering quality Safety, Health and Rescue Services for over thirty years.

Fall Protection



Delivering quality Safety, Health and Rescue Services for over thirty years.

Fall Protection for FD/EMS/PD

- First Responders may not know much about FP
- Need for training and education
- Tours of the site

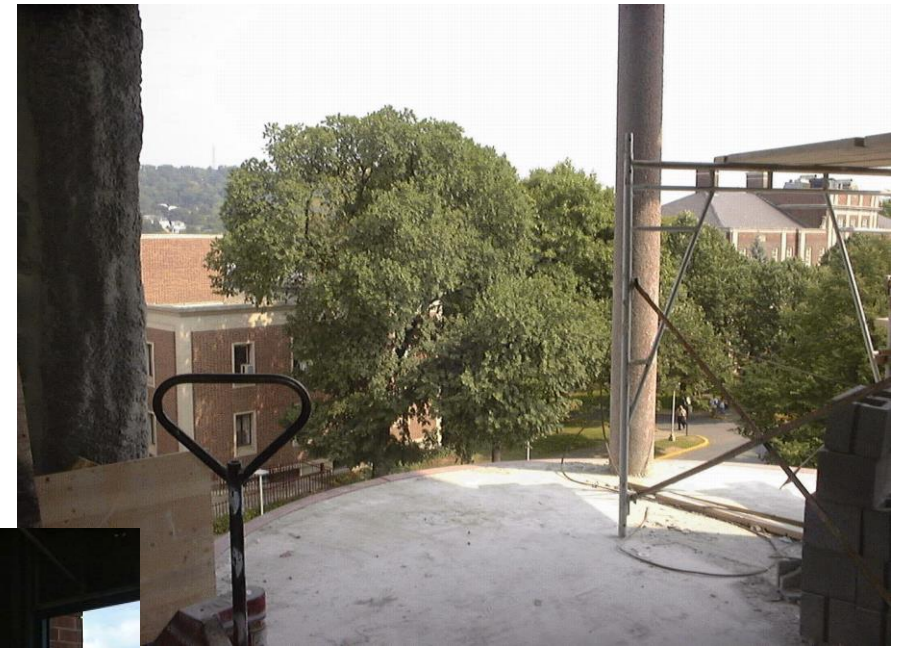


Delivering quality Safety, Health and Rescue Services for over thirty years.

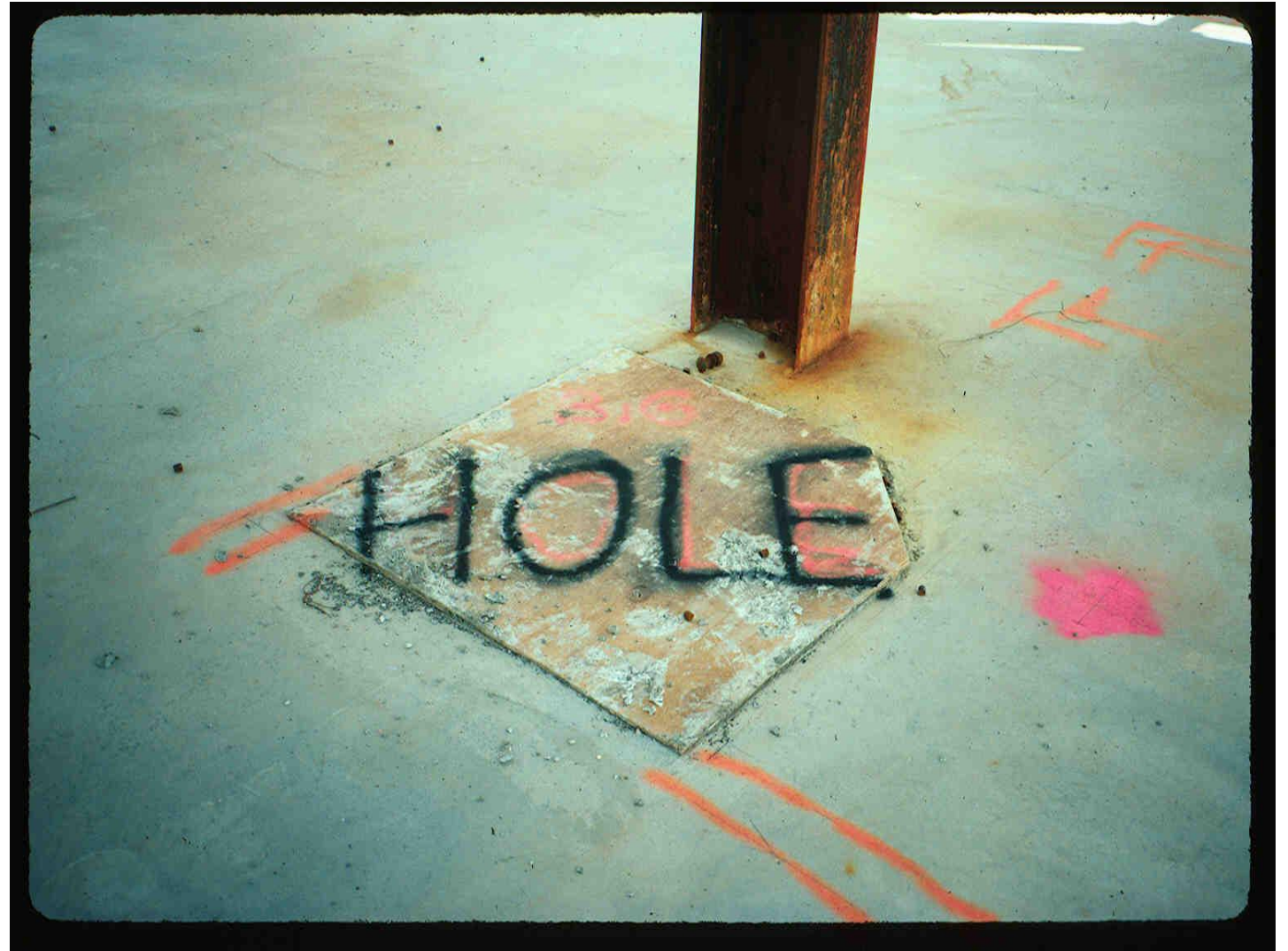
Floor Holes



Unprotected Sides and Edges



Delivering quality Safety, Health and Rescue Services for over thirty years.



Delivering quality Safety, Health and Rescue Services for over thirty years.

Case Study

- One Montgomery Plaza
 - Work using a Mast Climber
- Transformer explosion
- Fire Alarm was activated & 911 was called
- Power lost to entire building
- Crews on climber were stuck
- Emergency generator not for construction
- FD Arrived and wanted to call for the technical rescue team



Delivering quality Safety, Health and Rescue Services for over thirty years.



Delivering quality Safety, Health and Rescue Services for over thirty years.

Did Pre-Planning Pay Off?

Meet with each Platoon of the Norristown Fire Company

- Review the whole project with the FD
- Reviewed the safety and emergency procedures on the mast Climbers and Swing Scaffolding
- Got to know the Project Team



Delivering quality Safety, Health and Rescue Services for over thirty years.

Conclusion

- Invite them out and give them a tour
- Continue outreach
- Share as much as possible
- Set up a time/date for them to train
- Keep lines of communication open
- Think about worst case scenario
- Is any of this unreasonable?



Delivering quality Safety, Health and Rescue Services for over thirty years.

Thank You

Christopher Feder,

Director of Rescue Services

Cfeder@Med-Texservices.com

Cell: 484-988-0579



Delivering quality Safety, Health and Rescue Services for over thirty years.