



# Region III Update MACSC 12 Jan 2024



---

**Nicholas DeJesse**  
**Assistant Regional Administrator**  
**OSHA Region III**

# BLS Statistics – All Industries

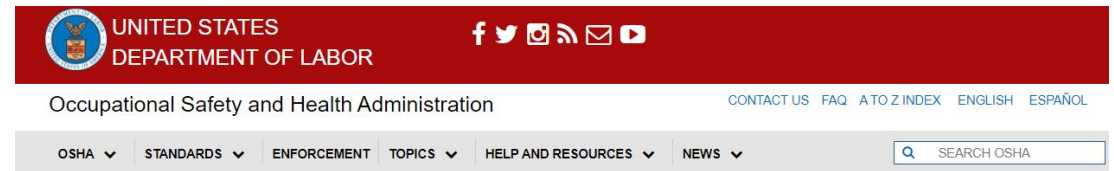
- **5,486** Fatalities in 2022, a 5.7% increase from 2021 (5190)
- A worker is dying every 96 minutes
- Transportation and material moving occupations experienced the most fatalities (1,620)
- Unintentional overdose increased 13% from 2021. Continuing an annual increase since 2012

# BLS Statistics – All Industries

- Suicides increased 13% from 2021...following decreases in 2019 & 2020. (267)
- Black/AA and Hispanic/Latino workers fatality rates increased
  - Highest cause of death for both groups (278 & 479)
  - 2<sup>nd</sup> Highest – B/AA – violence or injuries from animals (199)
  - 2<sup>nd</sup> highest for H/L – falls, slips, trips (286)
- Falls increase of ~2% - 865 with 80% to the lower level

# OSHA Directorate of Construction Infrastructure Safety and Health Webpage

- Focus Four Hazards
  - Standards
  - Directives
  - Letters of Interpretation
- Compliance Resources
  - Safety & Health Programs
  - Training Materials
  - Alliance and Partnership Programs
- External Partners



Construction Industry / Infrastructure Safety and Health

Infrastructure Safety and Health



[Infrastructure Safety and Health | Occupational Safety and Health Administration \(osha.gov\)](#)



# Focus Four Stats 2022

The breakdown of the causes of fatalities on construction sites in 2022 is as follows (numbers are a percentage of the **1069 total construction-related fatalities that occurred in 2022**)

- Falls: 410 (~38%)
- Struck-by object or equip: 88 (~8%)
- Electrocutions: 62 (~6%)
- Caught-in/between: 60 (~6%)



[Construction Focus Four Training | Occupational Safety and Health Administration \(osha.gov\)](https://www.osha.gov)

# Interesting 2022 BLS Stats

- 243 transportation fatalities (increase from 212 in 2021)
- 96 unintentional overdose (alcohol or drugs)
- 57 due to violence (person or animal) (increase from 40 in 2021)
- 40 trench-related fatalities in 2022 (increase from 25 in 2021)

# Focus 4 Trending

CY	2017	2018	2019	2020	2021	2022	2023	2024
BLS Data	2015	2016	2017	2018	2019	2020	2021	2022
Caught-in/betw	69	72	50	55	59	70	*29*	60
Electrical	81	82	71	86	79	53	74	62
Struck-by	90	93	80	112	90	83	75	88
Falls	364	384	381	338	418	368	390	410
<b>Totals</b>	937	991	971	1008	1061	1008	968	1069



# Trench Collapse Fatalities

- 2017: **24** fatalities
- 2018: **13** fatalities
- 2019: **21** fatalities
- 2020: **18** fatalities
- 2021: **25** fatalities
- 2022: **40** fatalities



*\*Source BLS CFOI Data 2024\**



# OSHA's 2022 Trenching Initiative

- June 14, 2022 - OSHA National Press Release on Increase of Trench-related Fatalities
- OSHA has:
  - Emphasized enforcement of the trenching and excavation standards
  - Increased outreach efforts
    - NUCA Trench Safety Stand Down, June 2024

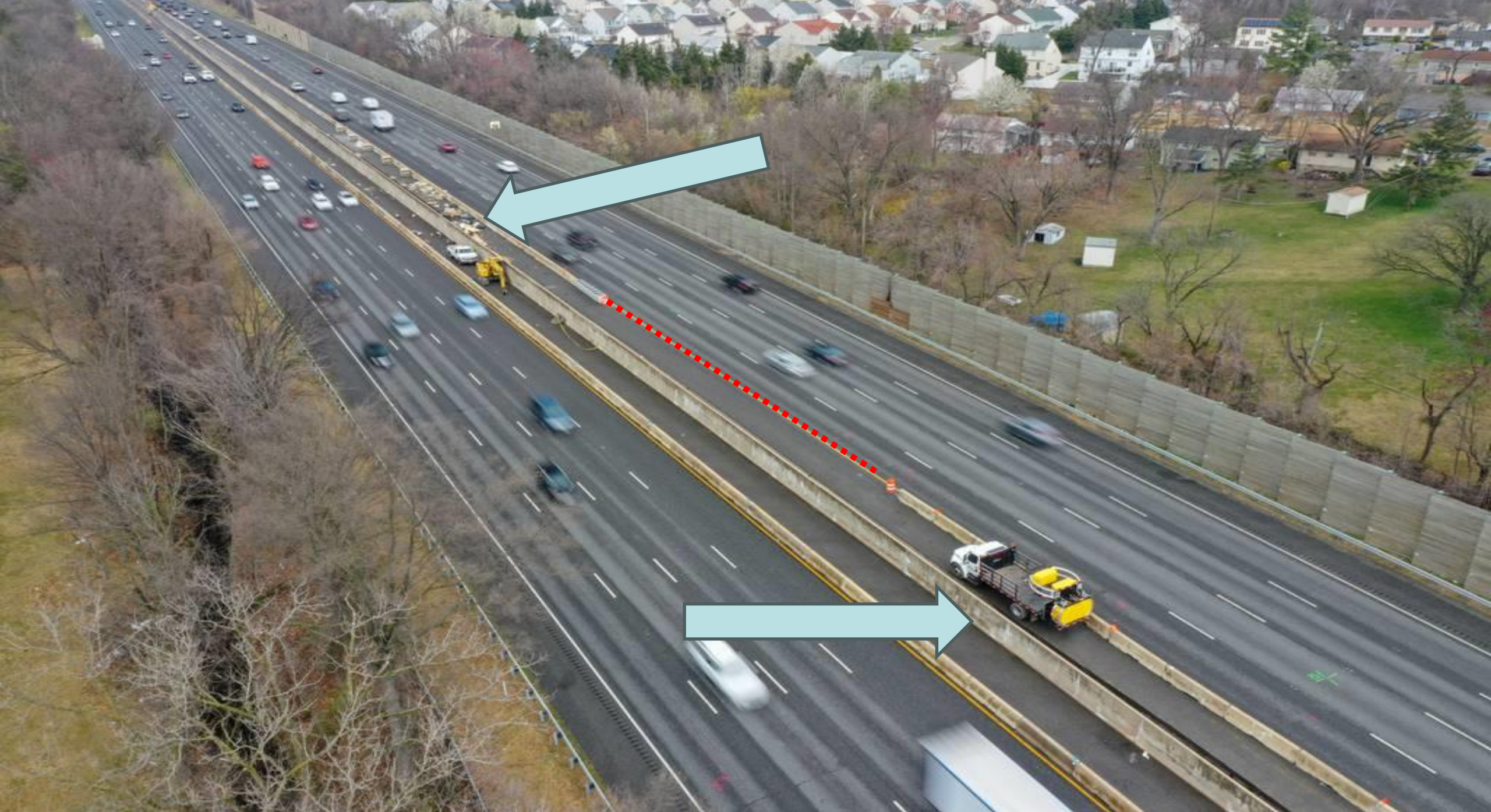
**\*\*\*Looking for other partners to decrease cave-ins\*\*\***



# Region 3 Deeper Dive

- Roadway or Workzone
  - Working with Roadway Worker Alliance, NIOSH, and FHWA
- Transportation Incidents
  - Working with DOT, Fleet Management/Safety
- Suicide Events
  - Working with Construction Industry Alliance and American Foundation on Suicide Prevention (AFSP)











# FY24 Construction Outreach Events

- **Region 3 Focus Four – March through June 2023 (Electrical, Struck-By, Falls, Caught-In)**
- National Work Zone Awareness Week, April 15-19, 2024
- National Safety Stand-Down to Prevent Falls in Construction, May 6-10, 2024
- Trench Safety Stand Down, Mid-June 2024
- Construction Suicide Prevention Week, September 9 -13, 2024





# Contact

Nicholas DeJesse  
Assistant Regional Administrator  
OSHA Region III

[DeJesse.Nicholas@dol.gov](mailto:DeJesse.Nicholas@dol.gov)

215-861-4939

***Contact me for site events and toolbox discussions!!!***

# Questions?

